

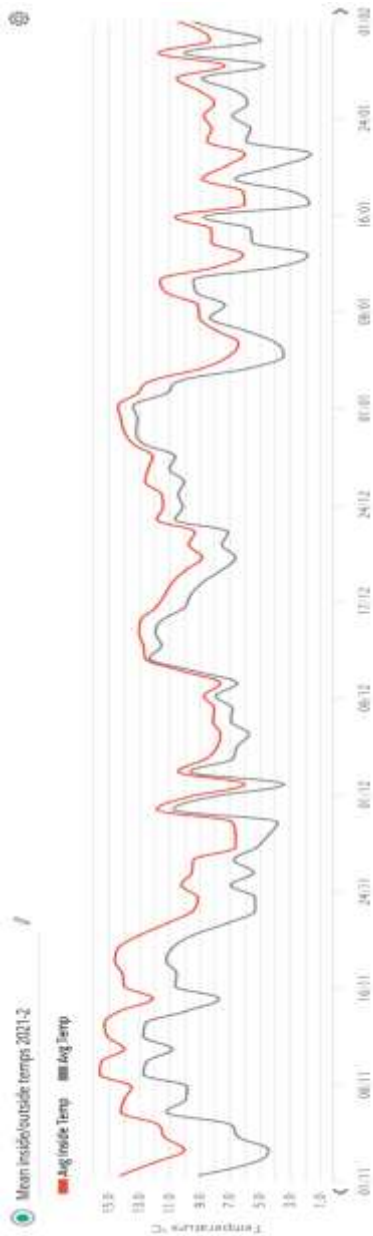
Forest garden greenhouse update 2022

Background

The ART forest garden greenhouse in Devon is a 400 sq metre structure, 6 years old, hosting a subtropical forest garden. It is heated in winter using a "climate battery" – using heat stored in the soil and subsoil from summer and autumn. The climate inside is basically outside + 5°C (roughly equivalent to south west Portugal), so the temperature rarely drops below zero.

Winter update – February 2022

This winter in Devon has generally been quite mild, but also quite sunless, and of course it is the amount of sun which most affects solar gain within the glasshouse. Soil temperatures dropped to around 10°C by the end of 2021, but started rising again in February. No obvious damage to plants inside has been observed from a few nights of near zero temperatures.



Mean air temperatures 2021-2



Mean soil temperatures 2021-2



Shrub pepper (*Capsicum pubescens* 'Rojo') continues fruiting all through winter (and indeed all through the year)



Nasturtium (*Tropaeolum majus*) has a reversed life cycle in the glasshouse. It thrives in winter, becoming a good ground cover, and dies back from the heat in summer.



Babaco fruits will ripen in the spring
(*Vasconcellea x heilbornii*)



Blue Java banana (*Musa* 'Blue Java')



Hoja santa /Mexican pepper leaf
(*Piper auritum*) is thriving



Jelly palm (*Butia capitata*) surrounded by
nasturtium



Aloe vera with New Zealand spinach



Pepino (*Solanum muricatum*) about to Flower



Okinawa spinach (*Gynura bicolor*) putting on fresh growth



Dwarf tamarillo (*Solanum abutiloides*) fruits ripen over the winter



Ripening lemons from *Citrus limon* 'Four Seasons' (= 'Lunario')

Photos taken on 11 February 2022 by Martin Crawford.